



Beaufort County Public Works Stormwater Infrastructure Project Summary

Project Summary: Beaufort County Adminstrative Building

Activity: Routine/Preventive Maintenance

Narrative Description of Project:

Completion: Aug-13

Raised (1) catch basin lid.

2014-531 / Beaufort County Admin. Building	Labor Hours	Labor Cost	Equipment Cost	Material Cost	Contractor Cost	Indirect Labor	Total Cost
AUDIT / Audit Project	0.5	\$10.23	\$0.00	\$0.00	\$0.00	\$6.62	\$16.85
CBIR / Catch Basin - Inlet Raised	10.0	\$223.48	\$18.10	\$93.03	\$0.00	\$149.55	\$484.16
ONJV / Onsite Job Visit	3.0	\$89.52	\$10.86	\$6.02	\$0.00	\$54.69	\$161.09
2014-531 / Beaufort County Admin. Building	13.5	\$323.23	\$28.96	\$99.05	\$0.00	\$210.85	\$662.10
Sub Total							
Grand Total	13.5	\$323.23	\$28.96	\$99.05	\$0.00	\$210.85	\$662.10

Before

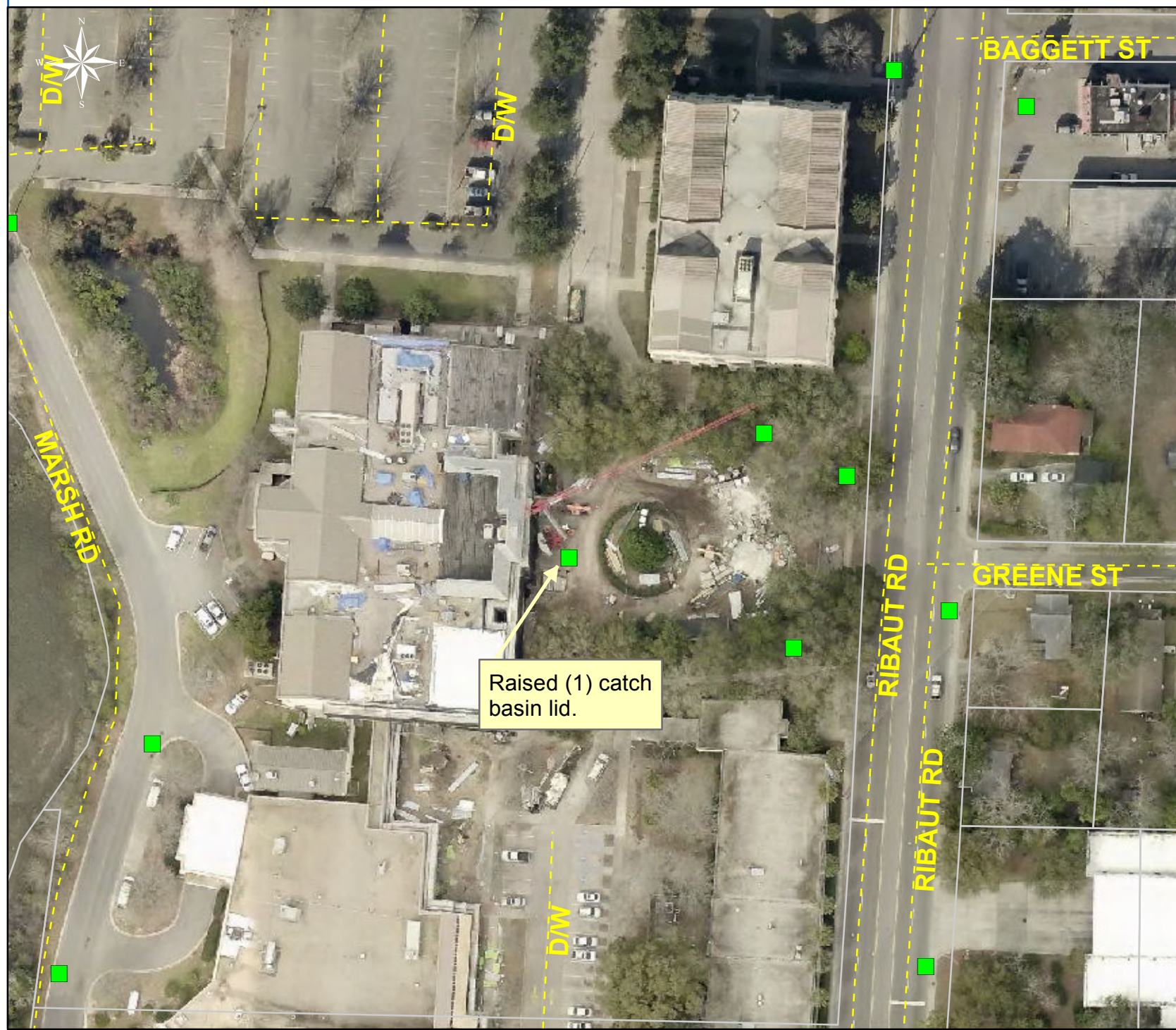


During



After





Project: Beaufort County Admin. Building

Activity: Routine/ Preventive Maintenance

Project #: 2014-531

Township: Port Royal Island

Completed: August 2013

Legend

TYPE

- River
- Creek/Stream
- River/Creek/Marsh BANK
- Channel (fka Outfall)
- Channel Pipe
- Lateral
- Lateral Pipe
- Roadside
- Roadside Pipe
- Road Pipe
- Crossline Pipe
- Driveway Pipe
- Access Pipe
- Bleeder Pipe
- Catch Basin



1 inch = 85 feet